

Test-report

No. Q MBL N 937 1204e

Reported to: Werksitz GmbH
W. Milewski
Obere Altach 1
97475 Zeil

Object: Swivelling work chair model range "WS12"
in PU-foam and upholstered design
(3 model + components supplied by the manufacturer)

Order: Test to ANSI/BIFMA X5.1-2002, Type II

Findings:

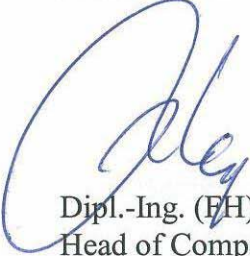
The test was carried out to ANSI/BIFMA X 5.1 - 2002 at the laboratory of LGA.

The swivelling work chair model range "WS12" in PU-foam and upholstered design complies to Type II in accordance with ANSI/BIFMA X 5.1-2002 and meets all requirements for performance and safety for Type II of this standard.

Technical data and details of the test are listed on the following page.

Nuremberg, 24/08/2007
Q MBL N hy/ra/ad

LGA QualiTest GmbH
Furniture Test Institute


Dipl.-Ing. (FH) R. Heym
Head of Competence Centre




Franz Rackl
Test Officer

The test report consists of 5 pages. Except when otherwise approved / licensed by LGA this test report may only be published and used in unabbreviated original phrasing and form. The test report contains the result of one single examination of the individual test sample and does not represent any universally valid evaluation of the qualities of all products from serial production. Should the content of the test report need any interpretation the German text shall be leading.

Test results

Object

Article: Swivelling work chair model range "WS 12"
Article no.: in Pu-foam and upholstered design
Number of samples: 3
Samples
Delivered by: Werksitz GmbH
Delivered: 26.02.2007 to 31.07.2007
Reg. No.: 152,160, 280, 546,625

Scope of tests

Technical tests
Test in accordance with ANSI/BIFMA X 5.1-2002 Type II

Applicability of test results

The test results refer solely to the samples tested. The digital photos - see test report - serve only to supplementary understanding and do not constitute any own part of the test report.

Measurement uncertainty

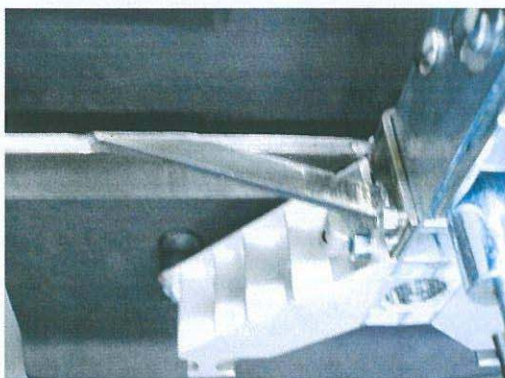
Unless otherwise stated all dimensions are measured to an accuracy according to DIN 7168-g for old constructions resp. DIN ISO 2768 part 1 "c" for new constructions. For all other physical values the measurement uncertainty is < 5 %.

Q MBL N 937 1204e

General examination

Brief description of the samples

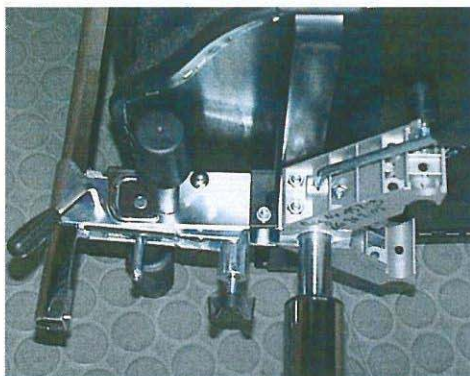
- Seat height adjustable by means of gas spring from Stabilus (low design)
- Denomination of gas spring: Stab-O-Mat DIN 4550-2 Type 2727 LG 300 N 345 R8
- Operating of the gas spring by hand lever
- Seat mechanism made of alu-die cast, disc clutch for variable seat and backrest inclination, counterbalance force for the backrest adjustable by a butterfly screw
- Backrest separately adjustable in height
- Backrest bearer made of steel tube
- Seat and backrest made of plywood with PU-foam or upholstery with fabric
- 5-star-base made of aluminum die casting with castors or disc glides
- Armrests height adjustable or fix made of plastic
- Armrest bearer made of flat steel 35 x 8 mm and diagonal strut, screwed to the seat mechanism
- Foot ring made of steel, diameter 440 mm
- Foot ring made of steel, for design with disc glides, clamped to the column of the gas spring



General examination

Brief description of the samples

- Seat height adjustable by means of gas spring from Stabilus (high design)
- Denomination of gas spring:
Stab-O-Mat, DIN 4550-2
Type 661368 350 N 26106 R1
- Operating of the gas spring by hand lever
- Seat mechanism made of alu-die cast, disc clutch for variable seat and backrest inclination, counterbalance force for the backrest adjustable by a butterfly screw
- Backrest separately adjustable in height
- Backrest bearer made of steel tube
- Seat and backrest made of plywood with PU-foam or upholstery with fabric
- 5-star-base made of aluminum with disc glides, or disk base, diameter 620 mm
- Armrests height adjustable or fix made of plastic
- Armrest bearer made of flat steel 35 x 8 mm and diagonal strut, screwed to the seat mechanism
- Foot ring made of steel, Ø 540 mm clamped to the column of the gas spring or different foot rests

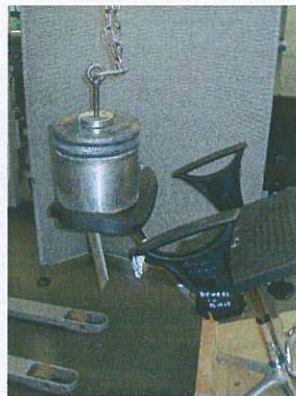


Summary of test results chair type II

Number	Name	Title
6	Back Strength Test - Static - Type II	passed
7	Base test -Static	passed
8	Drop Test - Dynamic	passed
9	Swivel test - Cyclic	passed
10	Tilt Mechanism Test – Cyclic	passed
11	Seating Durability Test – Cyclic	passed
12	Stability Test – Dynamic	passed
13	Arm Strength Test – Vertical – Static	passed
14	Arm Strength Test – Horizontal – Static	passed
16	Back Durability Test- Cyclic – Type II	passed
17	Caster Durability Test - Cyclic	passed
19	Footrest Durability Test – Vertical – Cyclic	passed
20	Arm Durability Test – Cyclic	passed



Test Number 5 Functional and proof load



Test Number 8 Functional and proof load



Test Number 13 Functional and proof load



Test Number 14 Functional and proof load

